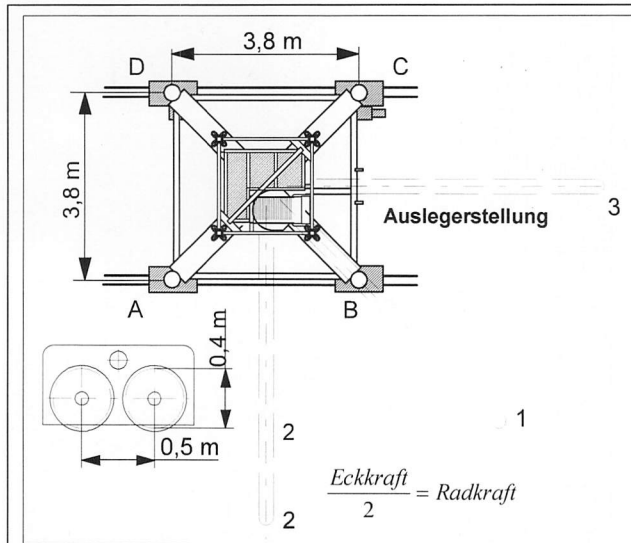
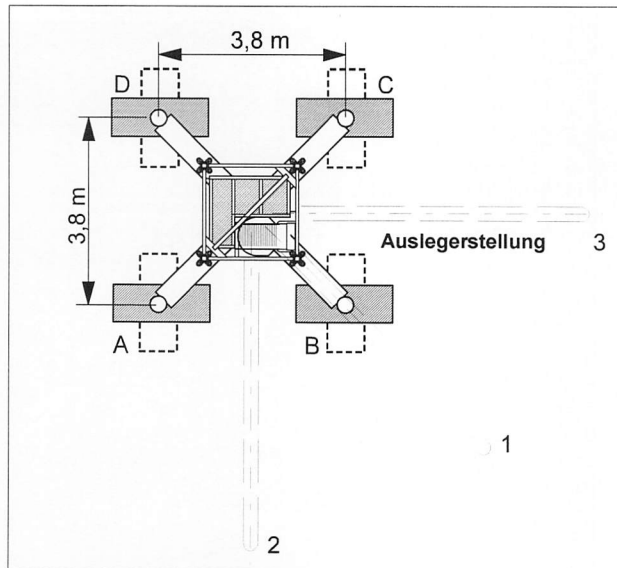


Erläuterung zu den Eckkrafttabellen

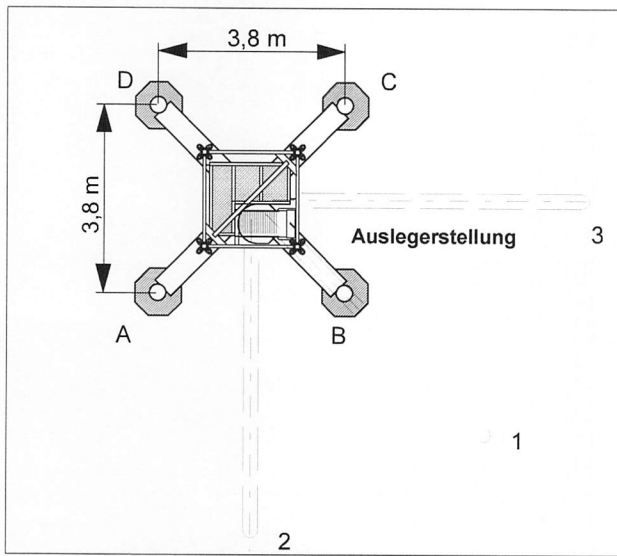
110 EC-B 6 FR.tronic®
 91 EC Fundamentkreuz
 3,8 m Spurbreite



Ausführung 1:
 schienenfahrbar
 auf Fundamentkreuz.



Ausführung 2:
 Stationär auf Fundamentkreuz mit
 Stützspindeln auf
 Fundamentplatten A3.



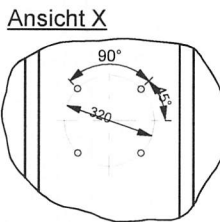
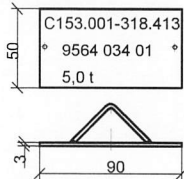
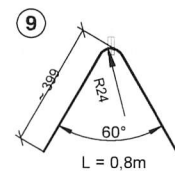
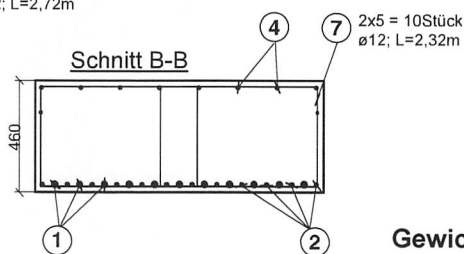
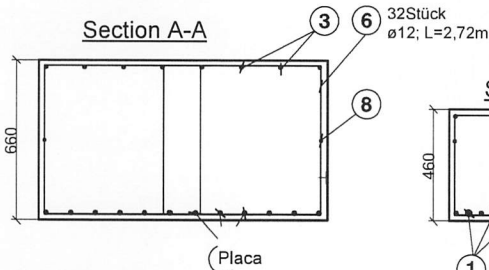
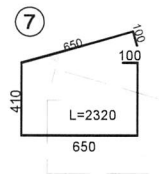
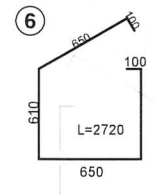
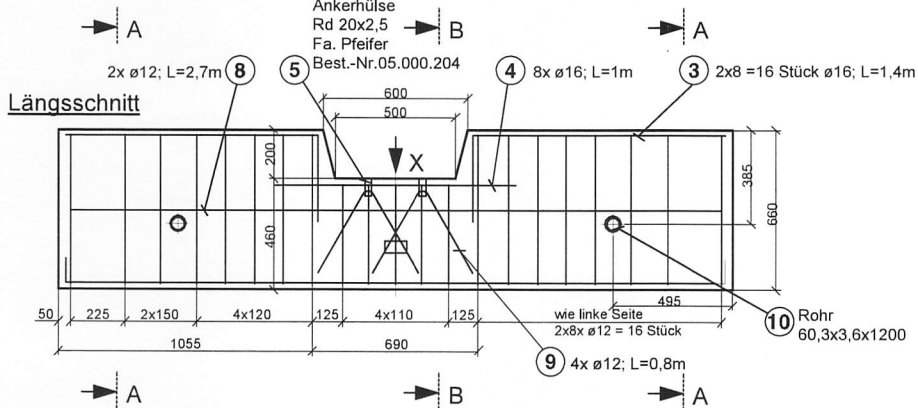
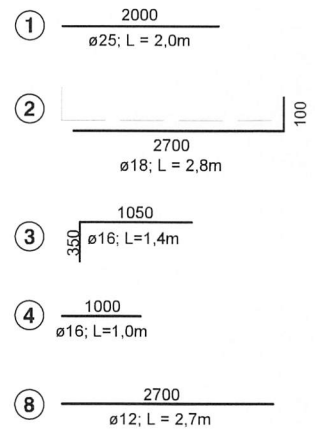
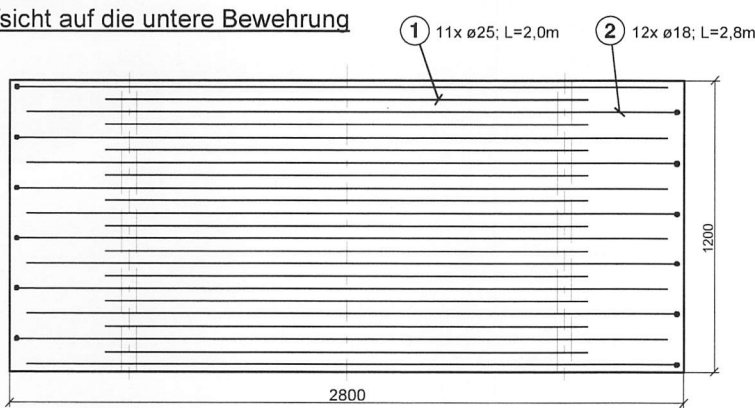
Ausführung 3:
 Stationär auf Fundamentkreuz mit
 Stützspindeln auf Abstützplatten.

Fundamentplatte "A3"

110 EC-B 6 + 110 EC-B 6 FR.tronic®

Zeichn.- Nr C 153.001-318.413

Draufsicht auf die untere Bewehrung

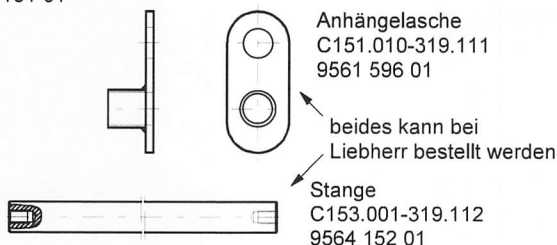


Gewicht: 5,0 t (2,4 t/m³)

Baustahl BSt 500/550
 Betondeckung 2cm
 Betongüte B25

alle Maße in mm
 alle Kanten 20x45° gebrochen

Anhängevorrichtung
 für einen "A3"-Block
 C153.001-319.100
 9564 151 01



Teil	Stück	Fundamentplatte "A3"
1	11	$\varnothing 25$, L = 2000
2	12	$\varnothing 18$, L = 2800
3	16	$\varnothing 16$, L = 1400
4	8	$\varnothing 16$, L = 1000
5	4	Ankerhülse Rd 20x2,50; Fa. Pfeifer, Best.-N° 05.000.204
6	32	$\varnothing 12$, L = 2720
7	10	$\varnothing 12$, L = 2320
8	2	$\varnothing 12$, L = 2700
9	4	$\varnothing 12$, L = 800
10	2	Rohr 60,3x3,6x1200